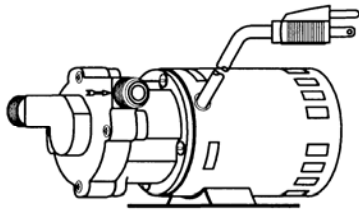




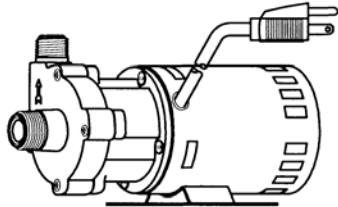
# MARCH PUMPS

1819 PICKWICK AVE., GLENVIEW, IL 60026-1306, U.S.A  
 PHONE: (847) 729-5300 - FAX: (847) 729-7062  
 WWW.MARCHPUMP.COM

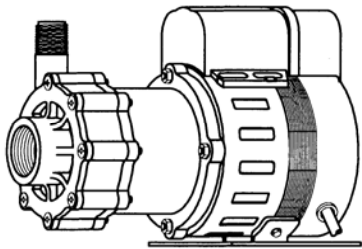
# BEER PUMPS



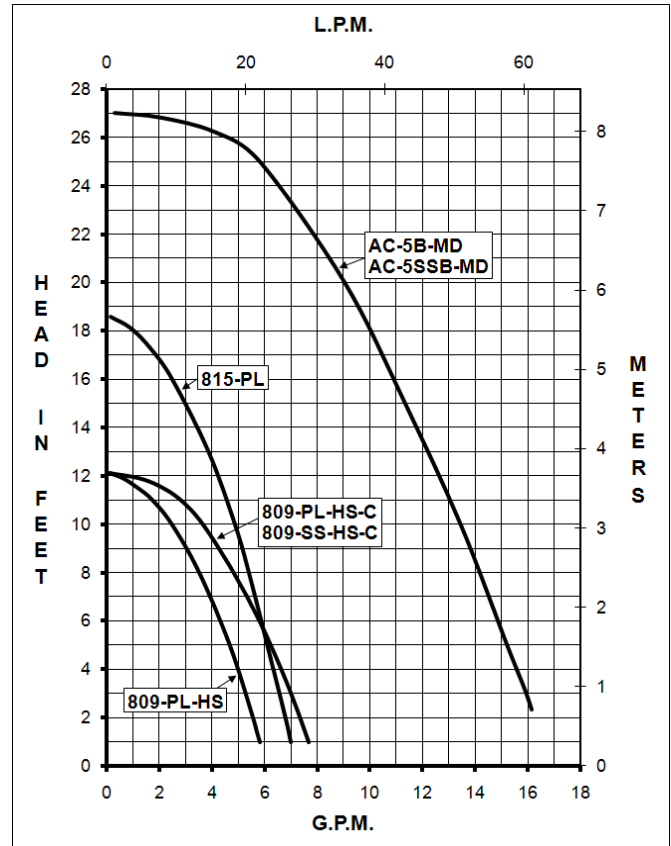
**809-PL-HS BEER PUMP**  
**815-PL BEER PUMP**



**809-PL-HS-C BEER PUMP**  
**809-SS-HS-C BEER PUMP**



**AC-5B-MD BEER PUMP**  
**AC-5SSB-MD BEER PUMP**



### MODEL ABBREVIATIONS:

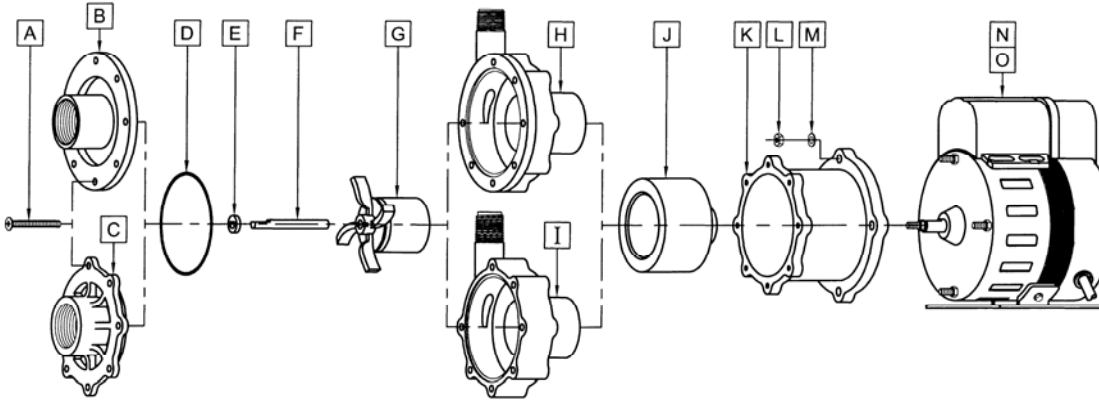
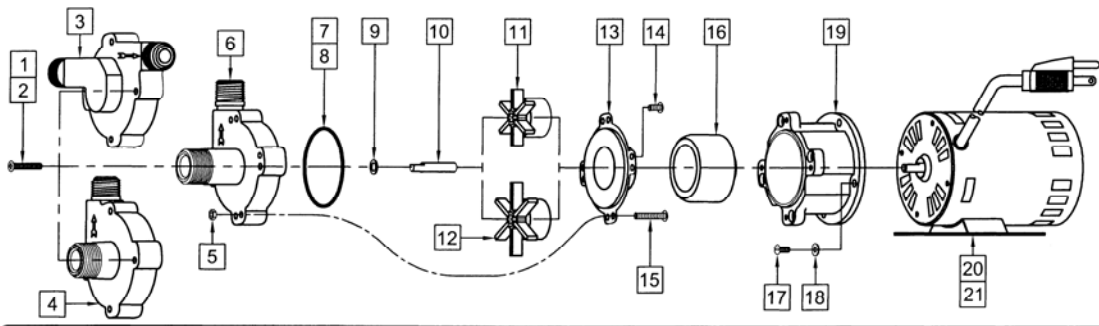
PL = Polysulfone Plastic  
 SS = Stainless Steel  
 C = Center Inlet

**DESCRIPTION:** Your March beer pump is a non-self priming magnetic drive unit built specifically to handle hot wort and water. The unit requires liquid being pumped to lubricate the internal parts. If the pump is run dry for a period of time the impeller and shaft may become damaged.

**NOTES:** All specifications & data are based on pumping water and are intended for use as a guideline only. Ratings & dimensions may vary depending on the current motor being used.

**LIMITED WARRANTY:** March pumps are guaranteed only against defects in workmanship or materials for a period of one year from date of manufacture pumping water. Register online at [www.marchpump.com/warranty-registration](http://www.marchpump.com/warranty-registration)

SPECIFICATIONS			809-PL-HS	809-PL-HS-C	809-SS-HS-C	815-PL	AC-5B-MD	AC-5SSB-MD
Max Flow	50Hz	lpm	18.9	26.4	26.4	22.7	60	60
	60Hz	gpm	6	7.5	7.5	7	17	17
Max Head	50Hz	m	2.5	2.5	2.5	4.1	6	6
	60Hz	ft (psi)	12.1 (5.23)	12.1 (5.23)	12.1 (5.23)	18.6 (8.05)	27 (11.7)	27 (11.7)
	Inlet		1/2" MPT	3/8" FPT & 3/4" MPT	3/4" MPT	1/2" MPT	1" FPT	1" FPT
	Outlet		1/2" MPT	1/2" MPT	1/2" MPT	1/2" MPT	1/2" MPT	1/2" MPT
Max Internal Pressure		psi	50	50	150	50	50	200
		bar	3.4	3.4	10	3.4	3.4	13
Max Liquid Temperature		°F	250	250	250	250	225	250
		°C	121	121	121	121	107	121
	Packed Weight	kg/lbs	2.3/5	2.3/5	2.7/6	2.3/5	4.3/9.5	5.6/12.5
	Motor Type		Air Cooled 115 or 230	Air Cooled 115 or 230	Air Cooled 115 or 230	Air Cooled 115 or 230	Air Cooled 115 or 230	Air Cooled 115 or 230
	Phase		1	1	1	1	1	1
50Hz	Volts		115 230	115 230	115 230	115 230	115 230	115 230
	Watts		109 110	109 110	109 110	129 128	214 223	214 223
	Amps		1.4 0.7	1.4 0.7	1.4 0.7	1.4 0.7	2.1 1	2.1 1
	Kw		0.029 0.029	0.029 0.029	0.029 0.029	0.029 0.029	0.093 0.093	0.093 0.093
	Rpm		2850 2850	2850 2850	2850 2850	2850 2850	2850 2850	2850 2850
60Hz	Volts		115 230	115 230	115 230	115 230	115 230	115 230
	Watts		97 101	97 101	97 101	122 126	234 250	234 250
	Amps		1.4 0.7	1.4 0.7	1.4 0.7	1.4 0.7	2.1 1	2.1 1
	Hp		1/25 1/25	1/25 1/25	1/25 1/25	1/25 1/25	1/8 1/8	1/8 1/8
	Rpm		3450 3450	3450 3450	3450 3450	3450 3450	3450 3450	3450 3450
	Electrical Connection		Cord	Cord	Cord	Cord	Cord	Cord
Overall Pump Dimensions (Inches)	Height		3.62	4.37	4.50	3.62	6.19	6.19
	Width		4.88	3.50	3.50	4.88	4.52	4.52
	Length		7.75	8.43	8.62	7.75	9.27	9.27
Overall Pump Dimensions (cm)	Height		9.1	11.0	11.4	9.1	15.7	15.7
	Width		12.3	8.8	8.8	12.3	11.4	11.4
	Length		19.6	21.4	21.8	19.6	23.5	23.5



**REPAIR PARTS LIST**

ITEM	DESCRIPTION	MATERIAL	QTY	PART #	809-PL-HS	809-PL-HS-C	809-SS-HS-C	815-PL	AC-5B-MD	AC-5SSB-MD
1	Screw #8-32 x 1" Long	Steel	4	0923-0003-1000	S	S		S		
2	Screw #8-32 x 1" Long	Stainless	4	0809-0205-1000			S			
3	Pump Housing (Inline)	Polysulfone	1	0809-0079-0100	S			S		
4	Pump Housing w/Center Inlet	Polysulfone	1	0809-0179-0100		S				
5	Hex Nut	Stainless	4	0991-0004-1000			S			
6	Pump Housing w/Center Inlet	Stainless	4	0809-0150-0000			S			
7	"O" Ring .070 CS x 2.441 ID	Silicone	1	0809-0165-1000			S			
8	"O" Ring 1/16" CS x 2-3/8 ID	Silicone	1	0809-0027-1000	S	S		S		
9	Thrust Washer	Teflon	1	0809-0043-1000	S	S	S	S		
10	Shaft	Stainless	1	0809-0161-1000	S	S	S	S		
11	Impeller (1-11/16" Dia.)	Ryton/Teflon/Glass	1	0809-0005-0200	S	S	S			
12	Impeller (2-5/32" Dia.)	Ryton/Teflon/Glass	1	0809-0107-0200				S		
13	Rear Housing	Stainless	1	0809-0012-1000	S	S	S	S		
14	Screw #8-32 x 3/8" Long	Stainless	4	0135-0040-1000	S	S		S		
15	Screw #8-32 x 1" Long	Stainless	4	0809-0205-1000			S			
16	Drive Magnet		1	0125-0083-0100	S	S	S	S		
17	Screw #8-32 x 3/8" Long	Stainless	4	0135-0040-1000	S	S	S	S		
18	Washer	Stainless	4	0858-0004-1000	S	S	S	S		
19	Motor Bracket	Plastic	1	0809-0058-1000	S	S	S	S		
20	Motor 115V 50/60Hz with base & 6 foot cord with plug		1	0809-0196-1000	S	S	S	S		
21	Motor 230V 50/60Hz (Not Shown) with base & 3 foot cord		1	0809-0124-1000	O	O	O	O		
A	Screw #8-32 x 1-3/4" Long	Stainless	7	0150-0021-1000					S	S
B	Cover	Stainless	1	0150-0111-0000						S
C	Cover	Polysulfone	1	0150-0189-1000					S	
D	"O" Ring	Buna-N	1	0135-0007-1000					S	S
E	Thrust Washer	Ceramic	1	0130-0028-1000					S	S
F	Shaft	Stainless	1	0939-0003-1000					S	S
G	Impeller Assembly w/Stainless Cover	Polysulfone/Stainless	1	0150-0173-0200					S	S
H	Rear Housing	Stainless	1	0150-0110-0000						S
I	Rear Housing w/Thrust Washer	Polysulfone/Ceramic	1	0150-0203-0100					S	
J	Drive Magnet Assembly		1	0150-0081-0100					S	S
K	Motor Connecting Bracket	Plastic	1	0150-0070-0100					S	S
L	Lock Washer (Int. Tooth)	Stainless	4	0802-0006-1000					S	S
M	Hex Nut	Stainless	4	0625-0024-1000					S	S
N	Motor 115V 50/60Hz with base & 3 foot cord		1	0150-0027-1000					S	S
O	Motor 230 50/60Hz (Not Shown) with base & 3 foot cord		1	0150-0040-1000					O	O

NOTE: Contact Factory for other materials and/or parts not listed.

Legend: S = Standard, O = Optional