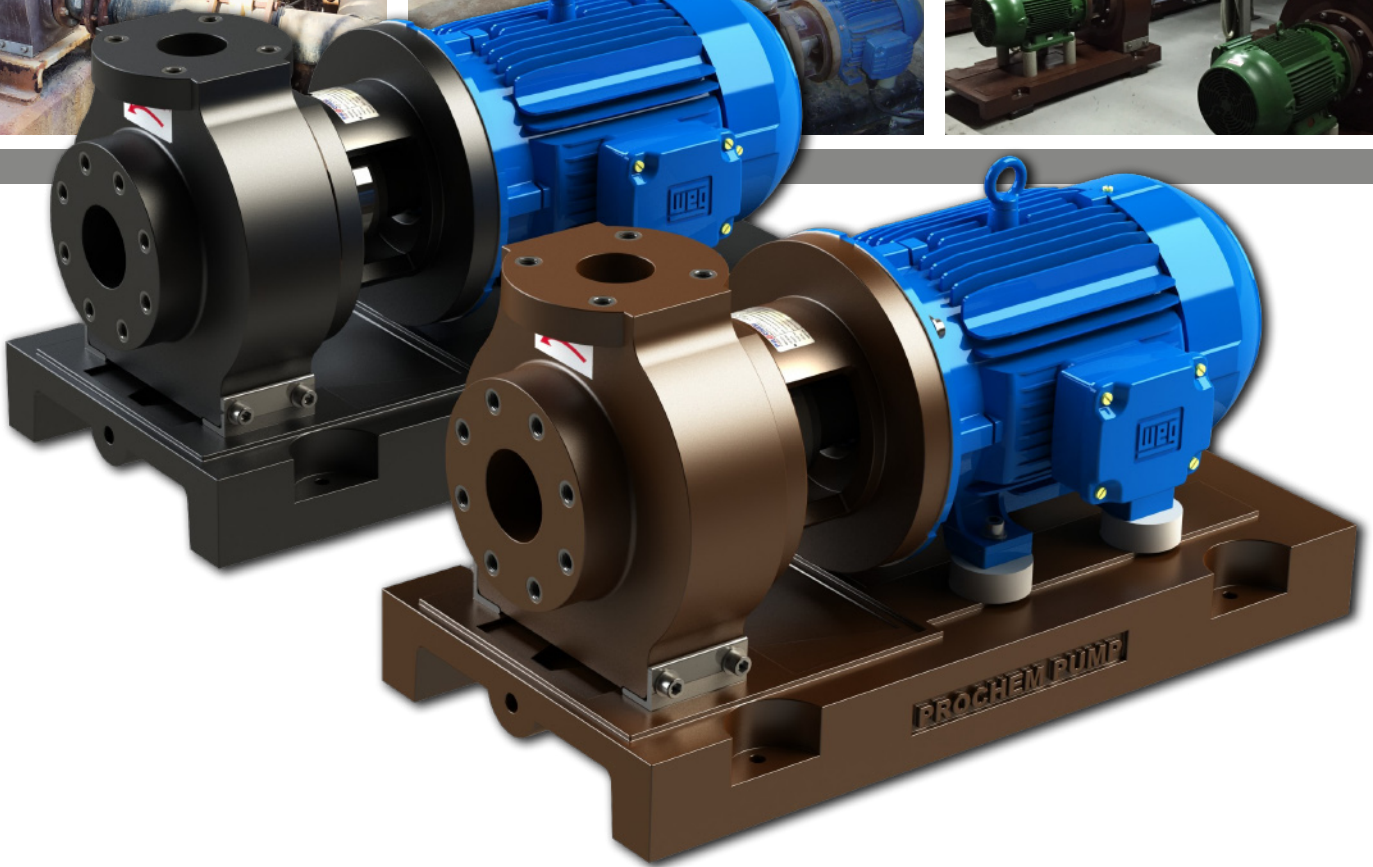


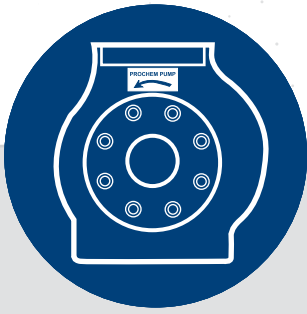
**CLOSE COUPLED
MONOBLOCK TO
DIN | 24255
24256**



#1

in chemical handling
corrosion resistant
pump technology

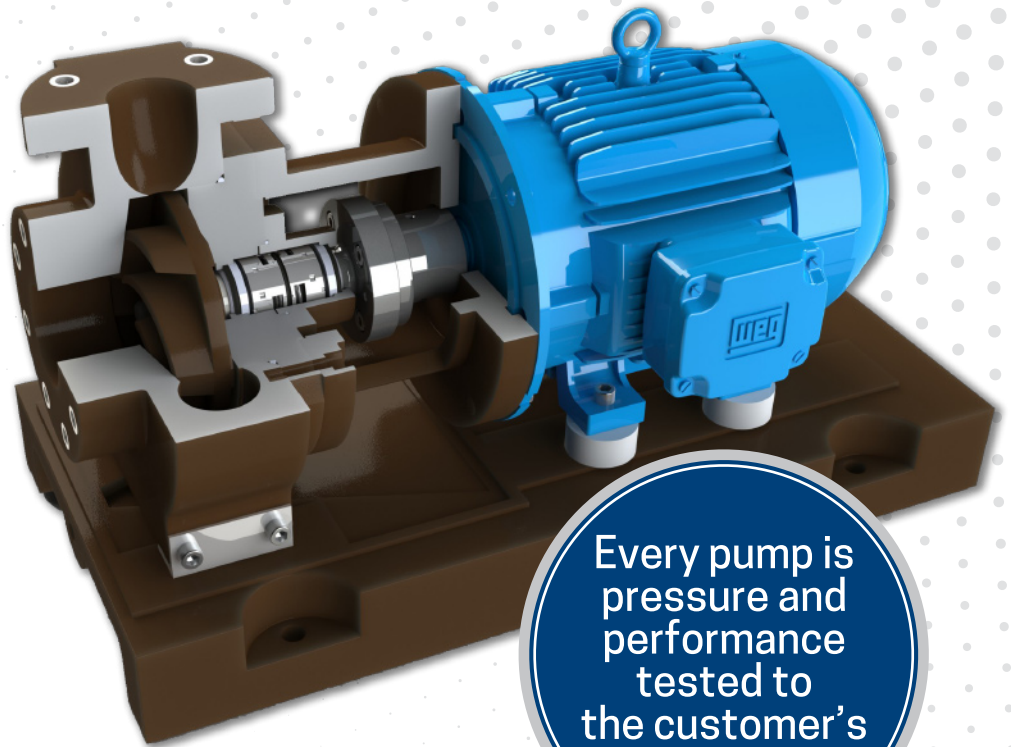
PROCHEM
CHEMICAL PUMP MANUFACTURERS



DESIGN

The Prochem horizontal, closed coupled (**HCC**) range of chemical pumps are of end-suction, back pull-out design.

Manufactured to DIN 24255 / 24256 specifications, and engineered for **EXTREME RELIABILITY** in the most extreme chemical processing applications.



Every pump is pressure and performance tested to the customer's duty point.

CONSTRUCTION



Prochem HCC pumps are constructed from a high density, thermoset **EPOXY RESIN** for superior corrosion resistance.

**100%
TESTED**

Long proven *EXPERIENCE* with synthetic materials in chemical handling and strict *OBSERVANCE* of design principles, ensure the end-user special *ADVANTAGES* of utilising the Prochem range of **EPOXY RESIN** pumps, namely:

- Superior corrosion resistance, where conventional materials offer limited service life
- Wide spectrum of aggressive chemicals (acids, alkalis & solvents) across the pH scale can be pumped
- Low vibration characteristics
- Virtually zero maintenance
- Small footprint and lightweight
- Non-sparking / Non-magnetic / Non-galling

- High wear / erosion resistance to chemical related slurries
- High strength and stability between operating temperatures -20°C to +120°C



On many occasions **PROCHEM** pumps are supplied where exotic alloy pumps manufactured in Hastelloy, Titanium and other exotic materials were conventionally being utilised - involving high capital and replacement costs.

Due to the single material concept and simple but robust design and the many other inherent features, **Prochem HCC pumps** will generally **out price, out perform** and **out last** many, if not all, major competitors supplying lined or unlined pumps in Engineered Plastics such as:



KEY SPECIFICATIONS

- Flow Rates up to 1,200 m³/hr (5,283 gpm)
- Heads up to 140 m (460 ft)
- IEC and NEMA electric motor mounts
- Petrol, diesel & hydraulic motor mounts
- Flanges to DIN/ISO and ANSI (optional)
- Max. Temperature < 130 °C
- Max. Viscosity over 200 cP
- Max. Density over 1.8

MECHANICAL SHAFT SEALING ARRANGEMENTS

DOUBLE ACTION MECHANICAL SHAFT SEAL

Generally used where products contain solids / crystallise / have limited lubricating properties. Flushing by external water supply or other compatible fluid. Also used in systems where dry running occurs.

SINGLE-ACTION EXTERNAL MECHANICAL SHAFT SEAL WITH PTFE BELLOWS

Generally used where products are semi to highly corrosive and relatively clean.

SINGLE-ACTION NON-RELIEVED INTERNAL MECHANICAL SHAFT SEAL

Generally used where products are chemical related slurries, and no external flushing can be accommodated. These seals are product flushed.

APPLICATIONS



Chemical Manufacture & Processing

Steel & Wire Manufacturing



Paper & Pulp Manufacturing

Water & Sewerage Treatment



Metal Finishing / Plating

Fume Scrubbing



Desalination

Fertiliser Manufacturing



Electronics (PC Board) Manufacturing

Precious Metal Refining



Textile Manufacture & Process

Pharmaceutical Manufacturing



Agriculture Plant & Process

Perfumaries & Cosmetics



Aquariums, Aquaculture & Zoos

The reliability in operation of a pump depends to a large degree on the correct choice of shaft seal. To meet the requirements of the vast number of applications, Prochem Pumps are fitted with High-Grade single/double-acting Standard Mechanical Seals, made by well-known major manufacturers. A wide variety of sealing materials are available to offer you the correct choice for your application.

One piece, solid cast **EPOXY RESIN**, back-pullout design Volute Casing. No disturbance of pipework when removing rotating assembly

Solid cast **EPOXY RESIN**, semi-open high efficiency Impeller. Keyed-shaft design, avoiding failure by reverse rotation

Solid cast **EPOXY RESIN** motor adaptor to suit IEC or NEMA motors

Standard IEC B3 / B5 flanged or NEMA D- flanged electric motors

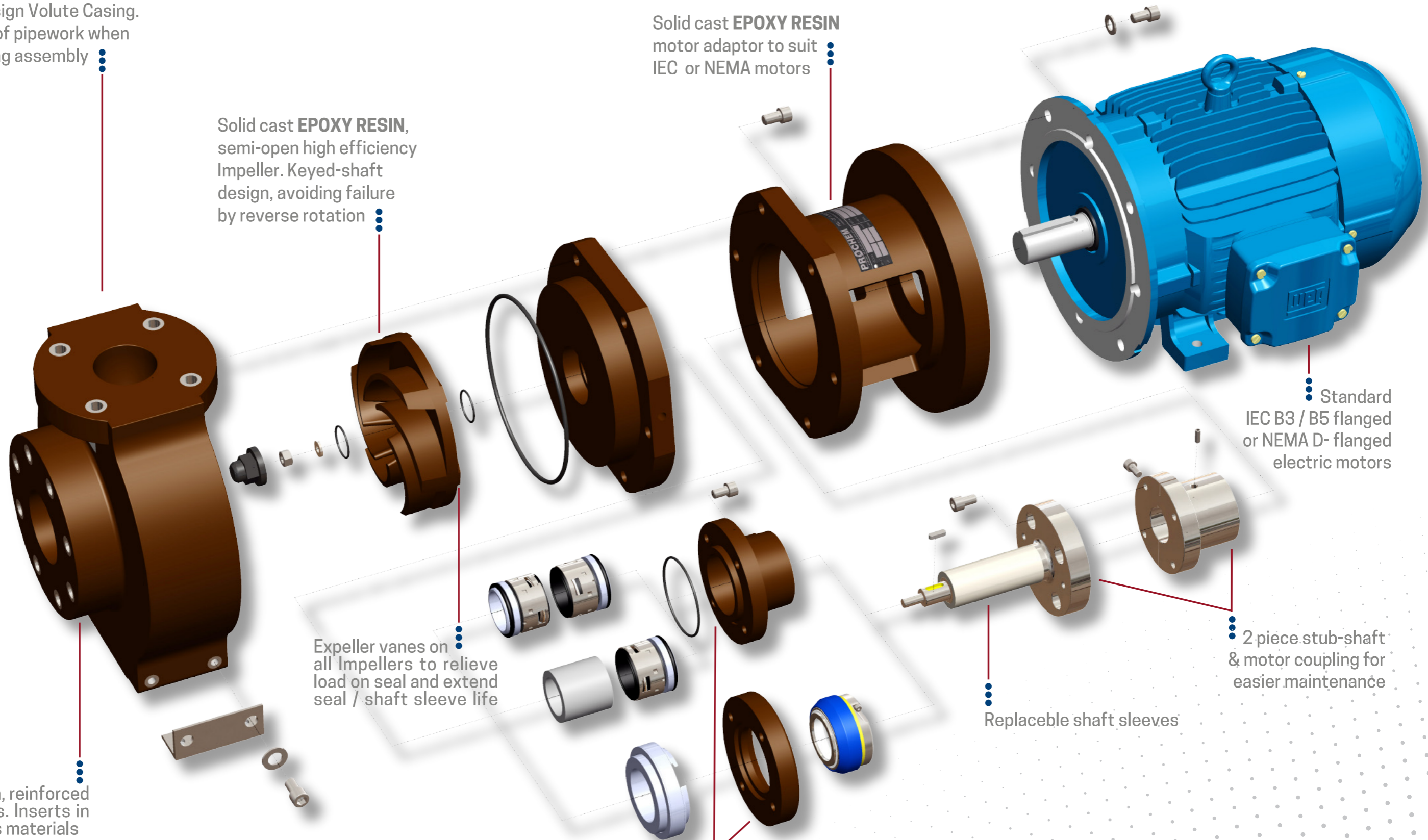
Cast-in, reinforced flanges. Inserts in various materials

Expeller vanes on all Impellers to relieve load on seal and extend seal / shaft sleeve life

Various shaft sealing options to cater for all chemicals

Replaceable shaft sleeves

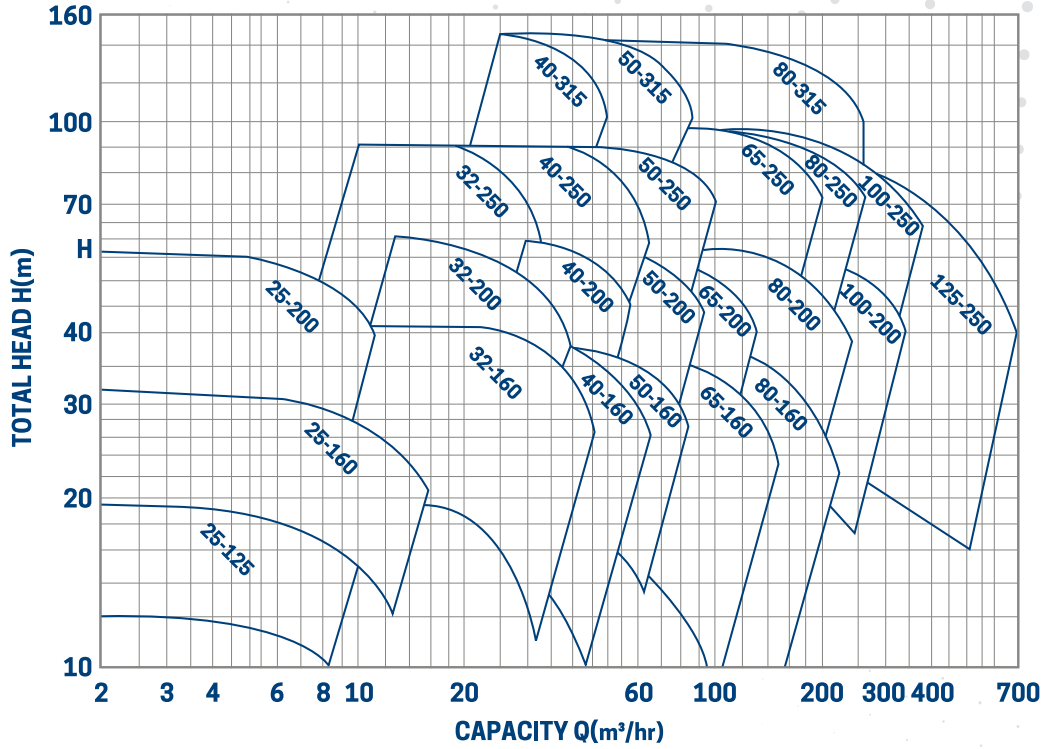
2 piece stub-shaft & motor coupling for easier maintenance



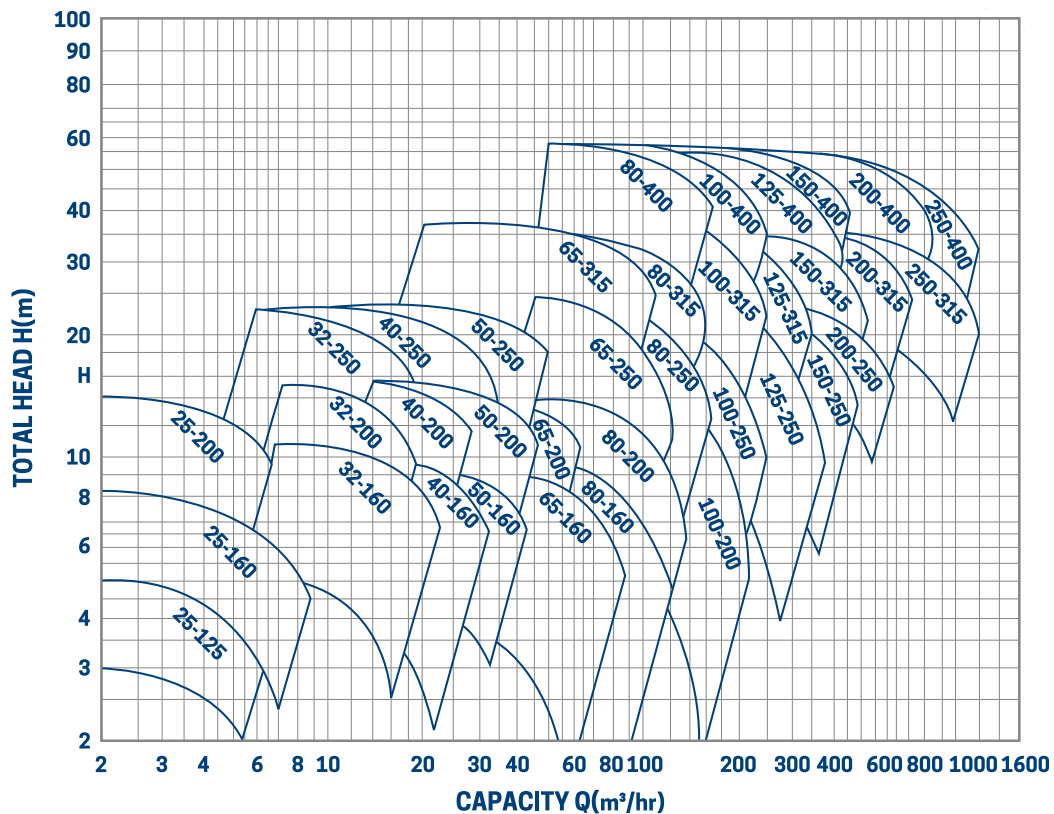


CURVES FOR STANDARDISED CRP HCC PUMPS

HYDRAULIC PERFORMANCE 2900 rpm



HYDRAULIC PERFORMANCE 1450 rpm

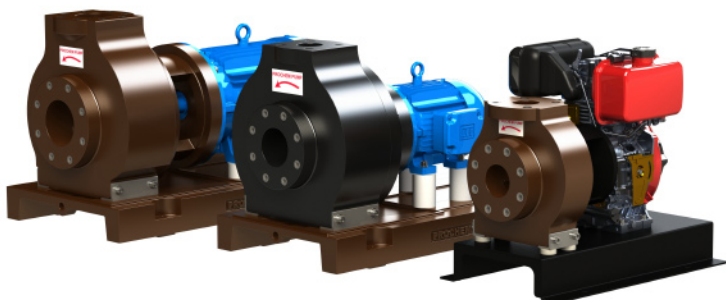


DIMENSIONAL DATA

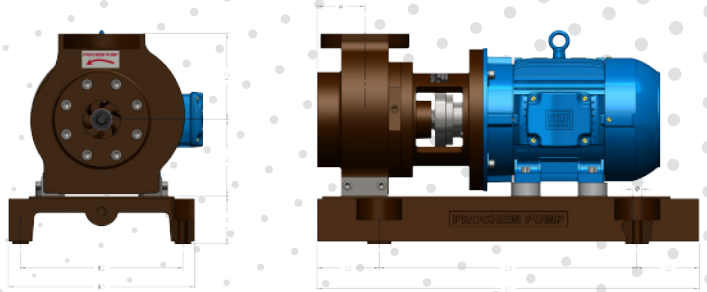
General lead dimensions only.
Certified drawings available on request.

Pump type	Motor Frame*	Suction	Discharge	a	h1	h2
CRP 25-25-160	90/112	25	25	63	112	160
CRP 40-25-125	80/90	40	25	71	110	140
CRP 40-25-200	90/180	40	25	80	160	180
CRP 50-32-160	90/180	50	32	80	132	160
CRP 50-32-200	90/180	50	32	80	160	180
CRP 50-32-250	100/200	50	32	100	180	225
CRP 65-40-160	90/180	65	40	80	132	160
CRP 65-40-200	90/180	65	40	100	160	180
CRP 65-40-250	90/180	65	40	100	180	225
CRP 65-40-315	100/200	65	40	125	200	250
CRP 65-50-160	90/180	65	50	80	132	160
CRP 80-50-200	100/200	80	50	100	160	180
CRP 80-50-250	100/200	80	50	116	180	225
CRP 80-50-315	100/200	80	50	125	225	280
CRP 80-65-160	90/180	80	65	100	160	180
CRP 80-65-200	100/200	80	65	100	180	225
CRP 80-65-315	100/200	80	65	125	225	280
CRP 80-65-400	160/250	80	65	125	250	355
CRP 100-65-250	100/200	100	65	125	200	250
CRP 100-80-160	90/180	100	80	125	180	225
CRP 100-80-200	100/200	100	80	125	180	250
CRP 100-80-250	100/200	100	80	125	200	280
CRP 100-80-315	100/200	100	80	125	250	315
CRP 100-80-400	160/250	100	80	125	280	355
CRP 125-80-250	100/200	125	80	125	225	250
CRP 125-100-200	100/200	125	100	125	200	280
CRP 125-100-250	100/200	125	100	140	225	280
CRP 125-100-315	160/250	125	100	140	250	315
CRP 125-100-400	160/250	125	100	140	280	355
CRP 150-125-250	100/200	150	125	140	250	355
CRP 150-125-315	160/250	150	125	140	280	355
CRP 150-125-400	160/250	150	125	140	315	400
CRP 200-150-250	160/250	200	150	160	280	375
CRP 200-150-315	160/250	200	150	160	280	400
CRP 200-150-400	160/250	200	150	160	315	450
CRP 200-200-250	160/250	200	200	180	355	420
CRP 250-200-315	200/250	250	200	200	355	450
CRP 250-200-400	200/250	250	200	180	355	500
CRP 300-250-400	200/250	300	250	200	425	600

* Motor frame sizes listed above indicate the **MINIMUM** and **MAXIMUM** allowable for our close coupled designs only. Special size pumps and adaptors are also available on request.



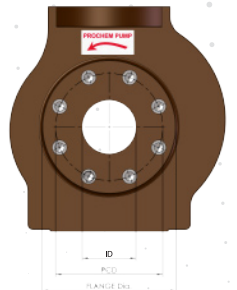
BASEPLATE DIMENSIONS



Base plate No.	Base Top	L1	L2	L3	H	B3	B2	φ
Size 1	268	500	130	240	85	280	250	12
Size 2	255	650	130	390	100	350	300	14
Size 3	305	800	130	540	100	390	340	14
Size 4	362	900	150	600	100	450	400	14
Size 5	402	1000	170	660	100	490	440	18
Size 6	432	1120	190	740	120	540	490	22
Size 7	496	1250	205	840	120	610	550	22
Size 8	535	1400	230	940	120	660	610	22

FLANGE DETAILS In accordance with BS 4504/10 & 16

Suction / Discharge	Table (Pressure)	Flange ø	PCD	No. of Holes	Hole ø	Stud Size
25	16	115	85	4	14	M12
32	16	140	100	4	18	M16
40	16	150	110	4	18	M16
50	16	165	125	4	18	M16
65	16	185	145	4	18	M16
80	10 / 16	200	160	8	18	M16
100	10 / 16	220	180	8	18	M16
125	10 / 16	250	210	8	18	M16
150	10 / 16	285	240	8	22	M20
200	10	340	295	8	22	M20
200	16	340	295	12	22	M20
250	10	395	350	12	22	M20
250	16	405	355	12	26	M24
300	10	445	400	12	22	M20
300	16	460	410	12	26	M24



Please consult with our Sales Office to confirm which dimensions to use for flanges >200NB

Alternative flange configurations and adaptors also available on request.

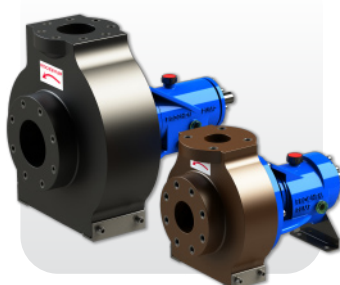
Prochem Pumps are rigidly inspected and tested at each stage of manufacture using the most up to date equipment available to ensure a quality product at all times. Prochem Pump and it's staff are at your service consistently.



OTHER MANUFACTURED PRODUCTS FROM PROCHEM



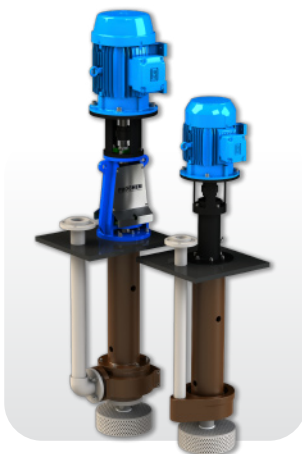
**Closed Coupled
Metallic Pumps**



**Long Coupled
Epoxy Resin Pumps**



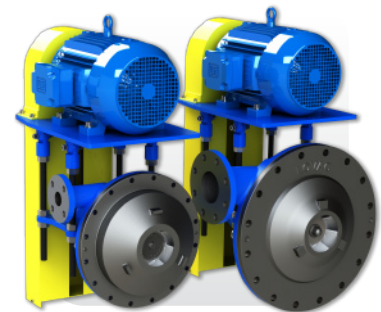
**Long Coupled
Metallic Pumps**



**Vertical Spindle
Epoxy Resin Pumps**



**Vertical Spindle
Metallic Pumps**



**LOVAC Receiver
Mounted Filtrate
Pumps**

PROCHEM

PROCHEM PUMP MANUFACTURING

Manufacturers and suppliers of chemical handling and allied pumping equipment since 1987.

Tel: (+27 11) 392 1800 | Fax: (+27 11) 392 1001 | Email: sales@prochempump.com

11 Spartan Rd, Kempton Park, Gauteng, 1619, South Africa
P.O. Box 10892, Aston Manor, 1630, South Africa

www.prochempump.com