

# GENERAL PRODUCT BROCHURE

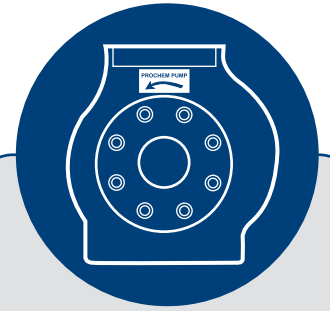


**PROCHEM**  
CHEMICAL PUMP MANUFACTURERS

Our principal range of pumps lie in chemical handling, which we manufacture from a non-metallic, thermosetting **EPOXY RESIN**. We have grown this range to 40+ models, offering flows up to 1,200 m<sup>3</sup>/hr and heads up to 140 m. These pumps were designed for pumping a wide range of corrosive liquids, where exotic alloy pumps were conventionally being used involving high capital and replacement costs. This range is available in a closed coupled, long coupled and vertical spindle format for sumps.

In 2003 we began to develop a full range of metallic pumps, locally cast and manufactured in Cast Iron, Stainless Steel, CD4MCu, Hastelloy-C, Alloy 20 and High Chrome. This range follows the same design as our non-metallic pumps, offering pumps in closed coupled, long coupled and vertical spindle.

We also manufacture a range of receiver-mounted filtrate pumps (LOVAC), specifically for the belt filtration industry. These pumps mount directly to the receiver tank of vacuum pump filtration systems found primarily in the power generation, mining, and pulp and paper industries.



Situated on the East Rand of Johannesburg, only 10min from OR Tambo International Airport, **Prochem Pump Manufacturing** have been designing and manufacturing pumps and pumping equipment in South Africa since March 1987.



Prochem manufacture and distribute a comprehensive line of chemical pumps and pumping equipment to fit the most demanding applications. Our products and services range from entry-level water pumps to the most state-of-the-art technology in the pumping industry.

To compliment and complete our range, **Prochem Pump Manufacturing** are also the sole distributors of a number of high quality, leading pump brands, including:



**Finish Thompson** – seal-less, magnetically driven centrifugal pumps (incl. self-priming pumps); as well as heavy duty ETFE-lined, ANSI mag-drive pumps.



**Finish Thompson** – drum pumps and barrel pumps.

**FTI Air** – high quality, air operated, lube-free double diaphragm pumps.



**Oberdorfer** – heavy duty, external gear pumps; centrifugal and rubber impeller pumps. Chemsteel chemical gear pumps.



**Micropump** – low-flow, high precision, magnetically driven gear pumps.



**ProMinent** – chemical metering / dosing pumps and peristaltic pumps.



**Yamada** – high quality, air operated, lube-free double diaphragm pumps.



**March Pump** – seal-less, magnetically driven centrifugal pumps.

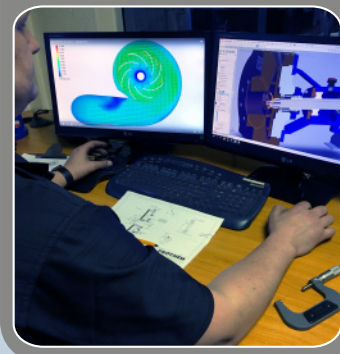
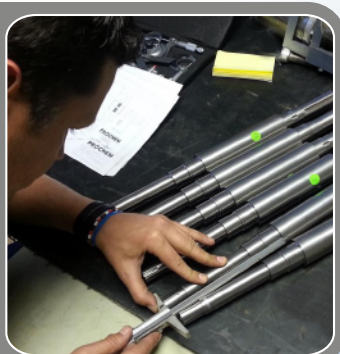
# PROCHEM

**Pump Manufacturing** have a fully stocked, engineering workshop and service centre, where we currently service, test and repair in excess of 650 pumps every year.

With a fully operational test bay (ISO 9906 Grade 2), **Prochem** can offer clients a full test analysis and report of findings.

In-house CNC machining equipment, paired with an advanced design, simulation and drawing office, allow us to fabricate and engineer almost any part required.

**Prochem Pump Manufacturing** provides customers with professional, independent, unbiased input in pump management, equipment analysis and product recommendation. These services assist customers to enhance run times, increase efficiency, and reduce overall cost of ownership.



**In our book,  
quality, price and  
service go  
without saying  
- not just as an  
afterthought**

## APPLICATIONS



Chemical Manufacture & Processing

Steel & Wire Manufacturing



Paper & Pulp Manufacturing

Water & Sewerage Treatment



Metal Finishing / Plating

Fume Scrubbing



Desalination

Fertiliser Manufacturing



Electronics (PC Board) Manufacturing

Precious Metal Refining



Textile Manufacture & Process

Pharmaceutical Manufacturing



Agriculture Plant & Process

Perfumaries & Cosmetics



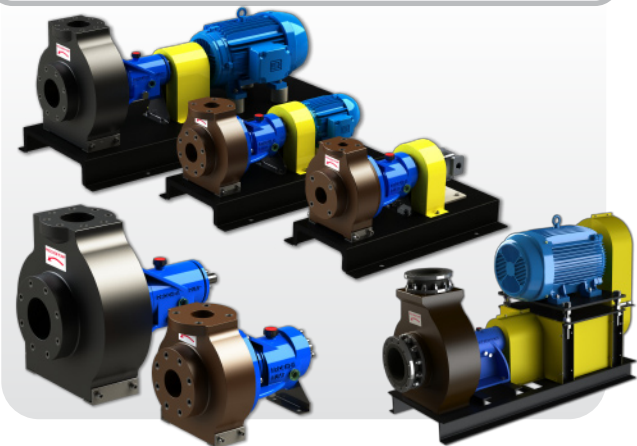
Aquariums, Aquaculture & Zoos

## PROCHEM HCC "NON-METALLIC" RANGE



- Corrosion resistant, epoxy resin chemical pumps
- Non-metallic wetted parts
- DIN 24255 / 24256
- 40+ models
- Horizontal, closed coupled, monoblock design
- Small footprint, zero maintenance
- Semi-open impeller
- Flow rates up to 1,200 m<sup>3</sup>/hr (5,283 GPM)
- Heads up to 140 m (460 ft)
- Temperatures up to 130 °C (266 °F)

## PROCHEM HLC "NON-METALLIC" RANGE



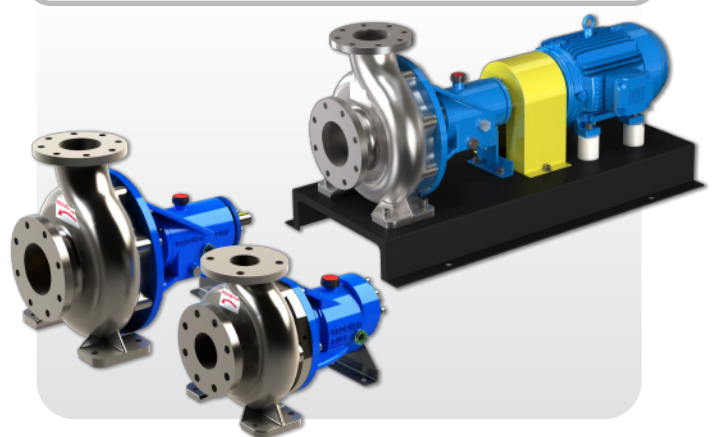
- Corrosion resistant, epoxy resin chemical pumps
- Non-metallic wetted parts
- DIN 24255 / 24256
- 40+ models
- Horizontal, long coupled, back pull-out design
- Sliding arrangement, heavy-duty bearing housing
- Semi-open impeller
- Flow rates up to 1,200 m<sup>3</sup>/hr (5,283 GPM)
- Heads up to 140 m (460 ft)
- Temperatures up to 130 °C (266 °F)

## PROCHEM HCC "METALLIC" RANGE



- Heavy-duty, metallic chemical pumps
- Metallic wetted parts in 316SS / 304SS / 904L / CD4MCu / CI / Hastelloy-C / Alloy-20 / High Chrome
- DIN 24255 / 24256
- 40+ models
- Horizontal, closed coupled, monoblock design
- Small footprint, zero maintenance
- Semi-open impeller
- Flow rates up to 1,200 m<sup>3</sup>/hr (5,283 GPM)
- Heads up to 140 m (460 ft)
- Temperatures up to 250 °C (482 °F)

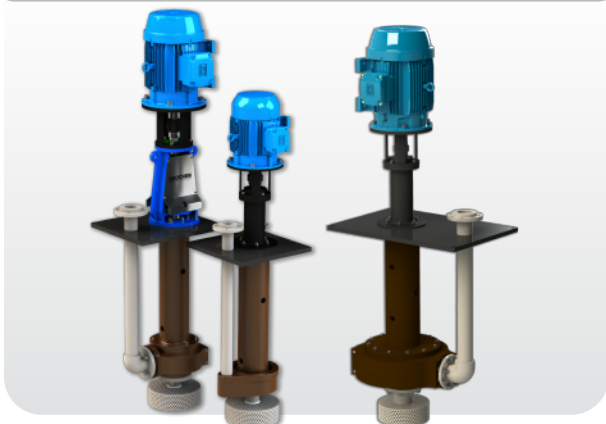
## PROCHEM HLC "METALLIC" RANGE



- Heavy-duty, metallic chemical pumps
- Metallic wetted parts in 316SS / 304SS / 904L / CD4MCu / CI / Hastelloy-C / Alloy-20 / High Chrome
- DIN 24255 / 24256
- 40+ models
- Horizontal, long coupled, back pull-out design
- Sliding arrangement, heavy-duty bearing housing
- Semi-open impeller
- Flow rates up to 1,200 m<sup>3</sup>/hr (5,283 GPM)
- Heads up to 140 m (460 ft)
- Temperatures up to 250 °C (482 °F)

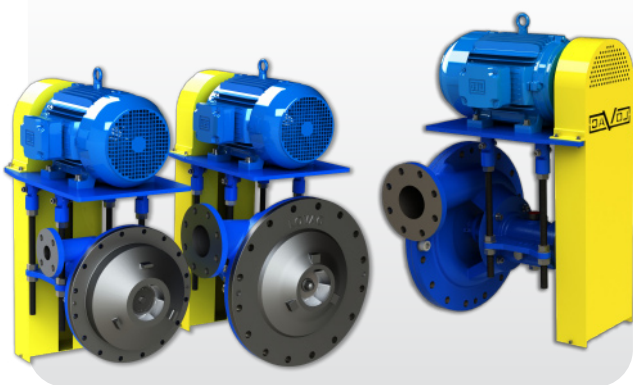
MANUFACTURED PRODUCTS

## PROCHEM VS "NON-METALLIC" RANGE



- Corrosion resistant, epoxy resin chemical sump pumps
- Non-metallic wetted parts
- 40+ models
- Vertical Spindle, cantilever design
- Seal-less, dry-running
- Various lengths available
- Semi-open impeller
- Flow rates up to 1,200 m<sup>3</sup>/hr (5,283 GPM)
- Heads up to 140 m (460 ft)
- Temperatures up to 130 °C (266 °F)

## LOVAC FILTRATE PUMPS



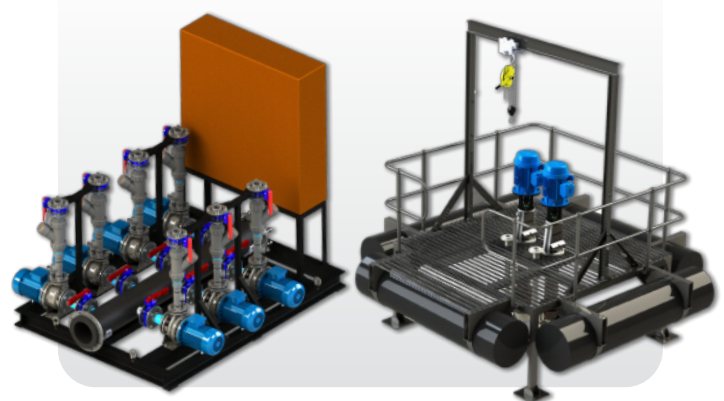
- Receiver mounted Filtrate Pumps
- Direct flange mounting eliminates NPSH problems
- Specifically designed for Vacuum Filtration / Belt Filters
- Metallic wetted parts in CI / 316SS / CD4MCu / Alloy-20 / Hastelloy-C / Chrome 27
- Operates in < 26" Hg vacuum
- Semi-open impeller
- Overhead V-belt Arrangement (std)
- Flow rates up to 227 m<sup>3</sup>/hr (1,000 GPM)
- Heads up to 45 m (148 ft)
- Temperatures up to 250 °C (482 °F)

## PROCHEM VS "METALLIC" RANGE



- Heavy-duty, metallic chemical sump pumps
- Metallic wetted parts in 316SS / 304SS / 904L / CD4MCu / CI / Hastelloy-C / Alloy-20 / High Chrome
- 40+ models
- Vertical Spindle, cantilever design
- Seal-less, dry-running
- Various lengths available
- Semi-open impeller
- Flow rates up to 1,200 m<sup>3</sup>/hr (5,283 GPM)
- Heads up to 140 m (460 ft)
- Temperatures up to 250 °C (482 °F)

## PROCHEM CUSTOM ENGINEERED PRODUCTS



- Specialised engineering, mechanical, electrical and piping design consultancy
- Full custom package simulation, fabrication, manufacture and assembly to client requirements
- Specialised OEM application design
- 30+ years experience
- Single point of contact from project start to project finish, ensuring continuity of knowledge and correspondence

MANUFACTURED PRODUCTS

## FINISH THOMPSON DB / SP MAG-DRIVE PUMPS



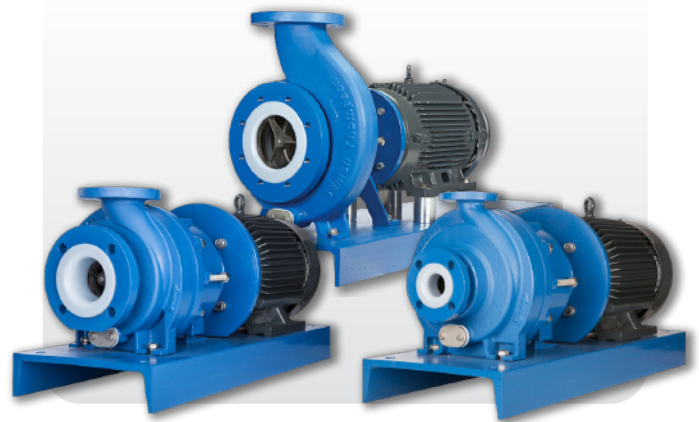
- Corrosion resistant, plastic chemical pumps
- Seal-less, magnetic drive
- Non-metallic wetted parts in PP or PVDF
- Horizontal, closed coupled, monoblock design
- Small footprint, zero maintenance
- Dry-running ability for hours
- Self-priming options
- Flow rates up to 50 m<sup>3</sup>/hr (221 GPM)
- Heads up to 61 m (201 ft)
- Temperatures up to 104 °C (220 °F)

## FINISH THOMPSON DRUM PUMPS



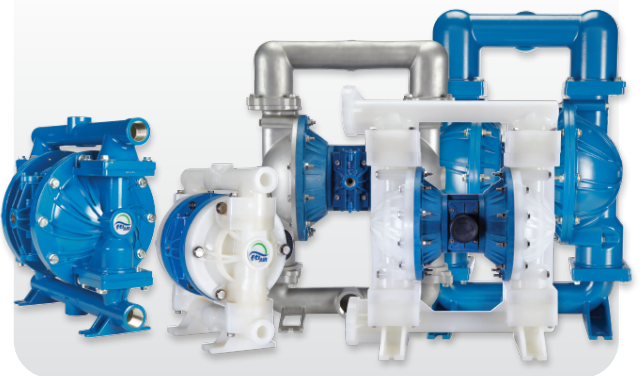
- PP, PVDF and 316SS tubes available
- Motor interchangeability across drum tubes
- Variable speed motors for high accuracy / control
- High-performance, high flow and economical options
- FDA-compliant materials
- Viscosity handling up to 100,000 cPs
- Flow rates up to 151 ltr/min (40 GPM)
- Heads up to 24 m (80 ft) – 9 bar on HVDP pumps
- Temperatures up to 82 °C (180 °F)

## FINISH THOMPSON ETFE-LINED MAG-DRIVE PUMPS



- Tough ductile iron construction with DuPont Tefzel (ETFE) lining for superior corrosion resistance
- Non-metallic wetted parts
- ANSI B73.1
- Powerful Neodymium magnets
- Seal-less, with dry-running ability for hours
- Heavy duty and ultra reliable
- Open and closed impeller options
- Flow rates up to 330 m<sup>3</sup>/hr (1,450 GPM)
- Heads up to 34 m (112 ft)
- Temperatures up to 130 °C (266 °F)

## FTI-AIR DIAPHRAGM PUMPS



- PP, PVDF, 316SS and Aluminium available
- 10+ internal material options
- Dry-running, self-priming and portable
- High efficiency, low air consumption
- Lube-free, non-stalling air motor design
- FDA-compliant materials
- Solids handling up to 12.7mm (½")
- Viscosity handling up to 25,000 cPs
- Flow rates up to 908 ltr/min (240 GPM)
- Heads up to 84 m (277 ft)
- Temperatures up to 177 °C (350 °F)

DISTRIBUTED PRODUCTS

## OBERDORFER GEAR PUMPS



- Bronze, CI, 316SS and Hastelloy pumps available
- Rugged, long and closed coupled designs
- Helical gearing, allowing quiet operation and high efficiency
- Positive displacement flow
- Suction lift capability < 6.3 m
- Viscosity handling up to 100,000 cPs
- Flow rates up to 662 ltr/min (175 GPM)
- Heads up to 103 m (338 ft)
- Temperatures up to 205 °C (400 °F)

## MICROPUMP MAG-DRIVE GEAR PUMPS



- 316SS, Hastelloy and Titanium pump options
- Small, lightweight and compact
- Seal-less, leak-free design
- External gear, cavity and suction shoe styles
- Positive displacement, continuous, pulseless flow
- Suction lift capability < 3.9 m
- Magnetic and electro-magnetic drives (12, 24, 36V)
- Precision accuracy, repeatability and reliability
- Flow rates up to 42 ltr/min (11.1 GPM)
- Heads up to 17 bar (250 PSI)
- Temperatures up to 205 °C (400 °F)

## PROMINENT DOSING / METERING PUMPS



- Diaphragm, hydraulic, plunger and peristaltic options
- Solenoid and motor drives
- Versatile and robust design
- Precision accuracy, repeatability and reliability
- Adjustable stroke length and stroke rates
- Variable speed for controlled dosing applications
- Flow rates from 2 ml/hr (laboratory use)
- Flow rates up to 40,000 ltr/hr (process engineering)
- Heads up to 3,000 bar
- Temperatures up to 205 °C (400 °F)

## WATER PUMPS



- 304SS, 316SS and CI options
- Full industrial, commercial, residential and agricultural range
- Surface centrifugal, multistage and in-line pumps
- Submersible dewatering, wastewater, sewage, vortex

DISTRIBUTED PRODUCTS





**PROCHEM PUMP MANUFACTURING**

**Manufacturers and suppliers of chemical handling and allied pumping equipment since 1987.**

**Tel: (+27 11) 392 1800 | Fax: (+27 11) 392 1001 | Email: [sales@prochempump.com](mailto:sales@prochempump.com)**

**11 Spartan Rd, Kempton Park, Gauteng, 1619, South Africa  
P.O. Box 10892, Aston Manor, 1630, South Africa**

**[www.prochempump.com](http://www.prochempump.com)**